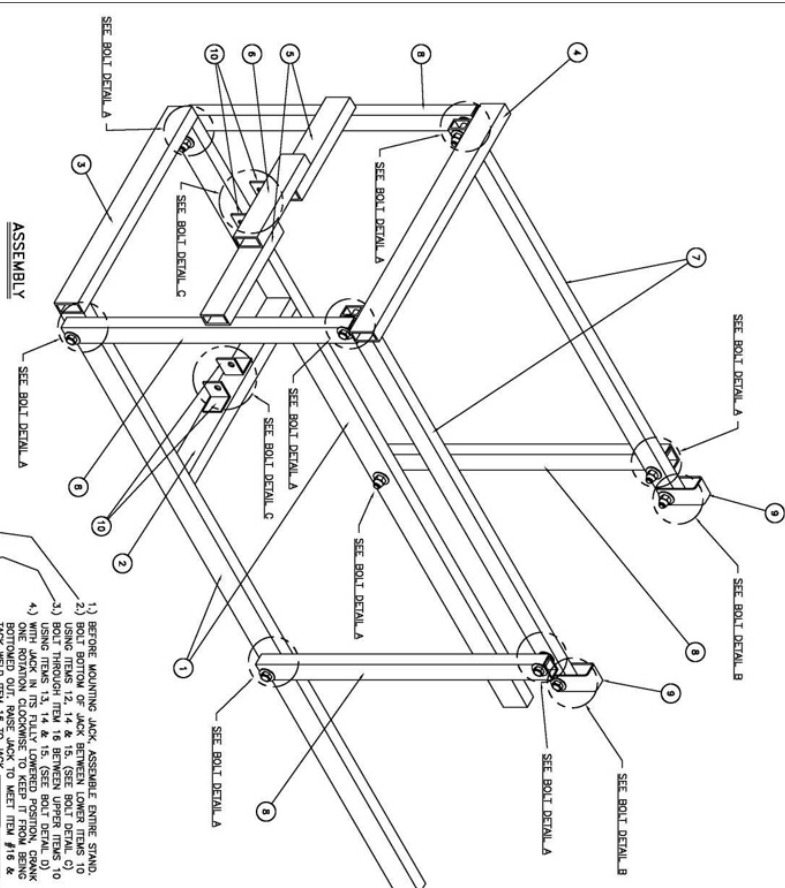


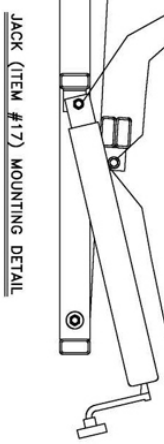
DIY snowmobile lift:



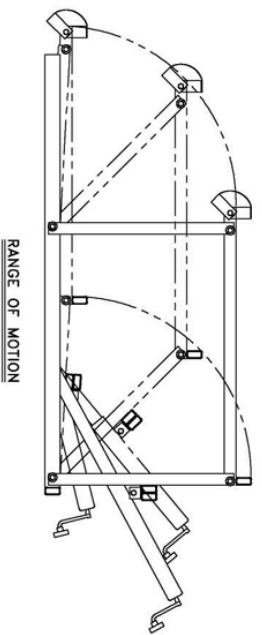
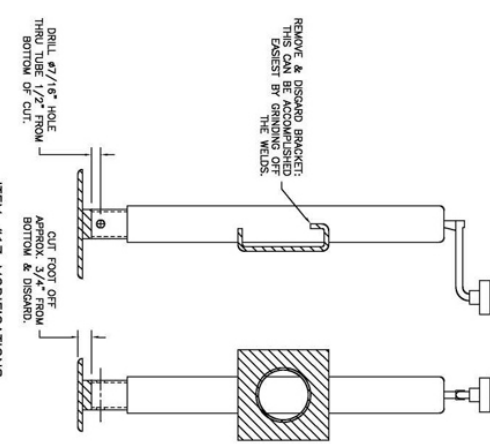
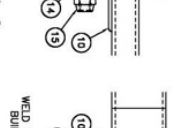
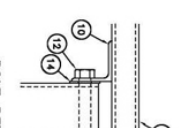
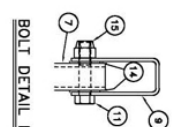
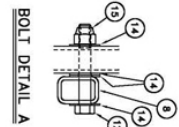
GENERAL NOTES:
 ALL HOLES TO BE DRILLED ARE 7/16" DIA. THRU HOLES (TYP.)
 ALL WELDS ARE TO BE 1/8" FULL STRENGTH CONTINUOUS BEAD
 FILED OR BUTT WELD UNLESS OTHERWISE SPECIFIED.
 AFTER ALL WELDING HAS BEEN DONE, ASSEMBLE LIFT TO INSURE
 PROPER ALIGNMENT. IF ALIGNED PROPERLY, DISASSEMBLE LIFT
 SPRAY 1 COAT OF A "RED IRON OXIDE PRIMER." AFTER PRIMER
 HAS CURED & DRIED, SPRAY 2 FINISH PAINT COATS. REASSEMBLE
 LIFT AFTER PAINT HAS CURED & DRIED THOROUGHLY.



- 1) BEFORE MOUNTING JACK, ASSEMBLE ENTIRE STAND.
- 2) BOLT BOTTOM OF JACK BETWEEN LOWER ITEMS 10 & 11.
- 3) BOLT BETWEEN ITEMS 12, 14 & 15. (SEE BOLT DETAIL D)
- 4) BOLT BETWEEN ITEMS 13, 14 & 15. (SEE BOLT DETAIL D)
- 5) WITH JACK IN ITS FULLY LOWERED POSITION, GRAB BOTTOMED OUT. RAISE JACK TO MEET ITEM #18 & TACK WELD ITEM 18 TO JACK.
- 6) DISASSEMBLE JACK & ITEM 18 AND FINISH WELDING. REMOVE JACK FROM WELDING AREA TO PREVENT BURNING THE GREASE OR THERMOS IN JACK DUE TO HEAT FROM WELDING. MAKE HEAVY WELD IS REQUIRED TO PREVENT BURNING THROUGH TUBE.
- 7) REASSEMBLE JACK & BOLT TO STAND.



JACK (ITEM #17) MOUNTING DETAIL



RANGE OF MOTION

PART NO.	REV'D	NO.	QTY	UNIT	SPECIFICATIONS
1		2	1	STL	RECT. TUBE - 1" x 2" x 1/8" WALL
2		1	1	STL	RECT. TUBE - 1" x 2" x 1/8" WALL
3		1	1	STL	RECT. TUBE - 1" x 2" x 1/8" WALL
4		1	1	STL	RECT. TUBE - 1" x 2" x 1/8" WALL
5		2	1	STL	RECT. TUBE - 1" x 2" x 1/8" WALL
6		2	1	STL	RECT. TUBE - 1" x 2" x 1/8" WALL
7		2	1	STL	RECT. TUBE - 1" x 1 1/2" x 1/8" WALL
8		4	1	STL	RECT. TUBE - 1" x 1 1/2" x 1/8" WALL
9		2	1	STL	PLATE - 1/8" x 1 1/2" x 7 3/4" LG.
10		4	1	STL	ANGLE - 1/8" x 1 1/2" x 1 1/2"
11		2	1	STL	FLAT BAR - 7/16" x 2" LG.
12		9	1	STL	HEX BOLT - 7/16 x 3" LG.
13		1	1	STL	HEX BOLT - 7/16 x 4" LG.
14		44	1	STL	REGULAR FLAT WASHER - 7/16
15		12	1	STL	LOCK NUT - 7/16
16		1	1	STL	ROUND MESH TUBING - TUBING NETS TO HAVE AN I.D. LARGE ENOUGH FOR ITEM #13 TO FIT LOOSELY. THE TUBING NETS TO BE 2 7/8" LG.
17		1	1	STL	JACK - (BULLDOZER) 1/2" DIA. TRAVEL MODEL # TML 151 DS OPERATOR.

